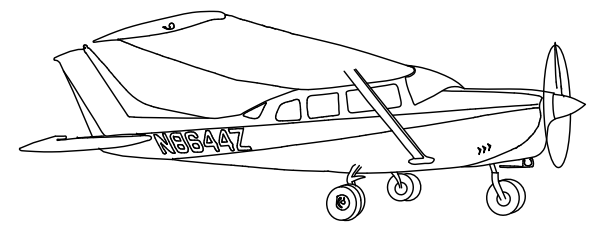
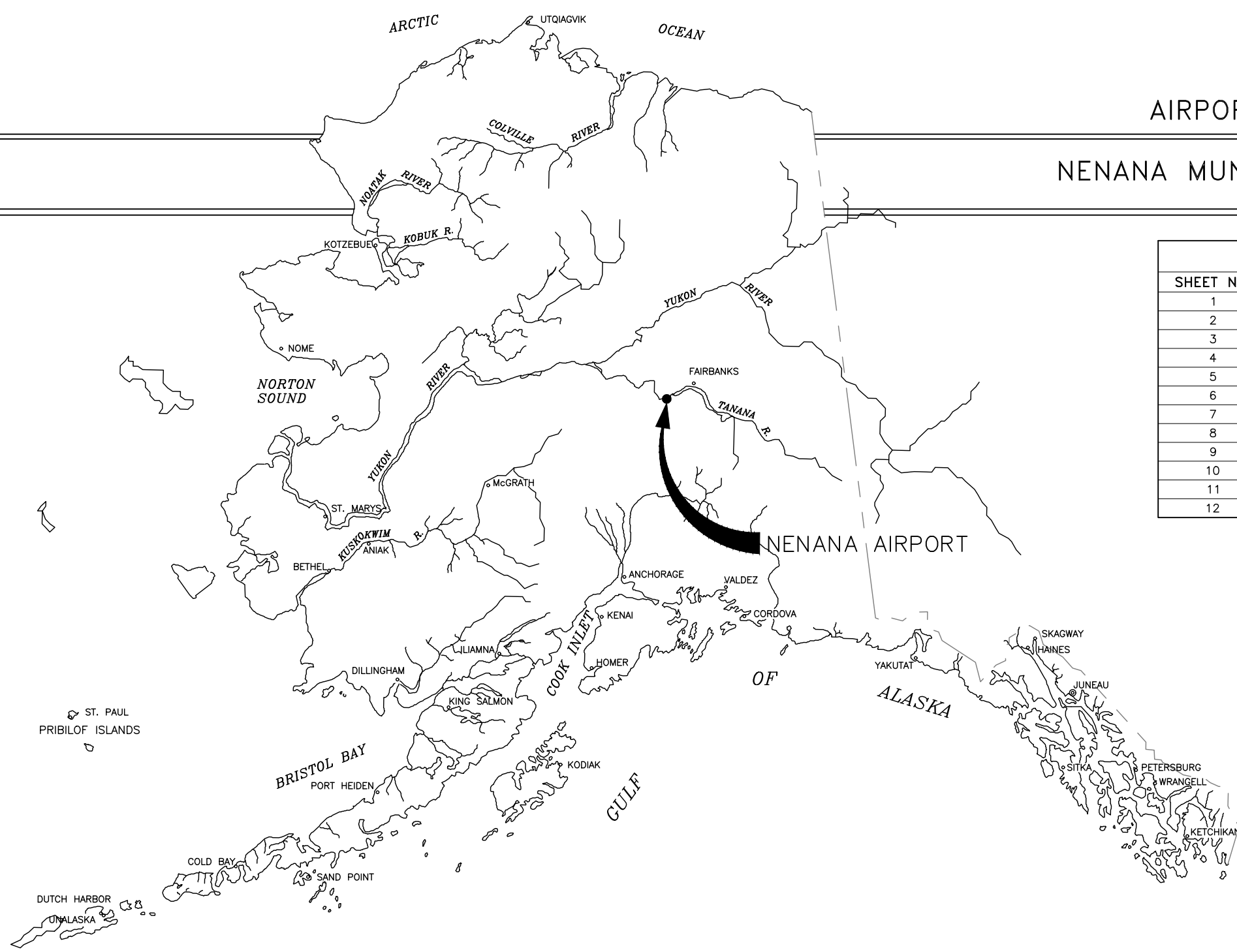


DRAFT

AIRPORT LAYOUT PLAN

NENANA MUNICIPAL AIRPORT (ENN)


DRAWING INDEX	
SHEET NO.	DRAWING TITLE
1	COVER SHEET
2	AIRPORT DATA SHEET
3	EXISTING AIRPORT LAYOUT PLAN
4	ULTIMATE AIRPORT LAYOUT PLAN
5	TERMINAL AREA DRAWING
6	AIRPORT AIRSPACE DRAWING
7	RW 4L-22R INNER PORTION OF THE APPROACH PLAN & PROFILE
8	RW 4R-22L INNER PORTION OF THE APPROACH PLAN & PROFILE
9	RW 4W-22W INNER PORTION OF THE APPROACH PLAN & PROFILE
10	RW 4L-22R DEPARTURE SURFACE DRAWING PLAN & PROFILE
11	ON-AIRPORT LAND USE DRAWING
12	EXHIBIT 'A' AIRPORT PROPERTY MAP



PREPARED FOR:
NENANA MUNICIPAL AIRPORT
 AIRPORT MANAGER: DAN SMITH

PO BOX 70
 NENANA, AK 99760

PREPARED BY:



3535 College Road, Suite 100
 Fairbanks, Alaska 99709
 907-375-0275


ABBREVIATIONS

AC	ADVISORY CIRCULAR	EL	ELEVATION	NAVD88	NORTH AMERICAN VERTICAL DATUM OF 1988	RPZ	RUNWAY PROTECTION ZONE
ALP	AIRPORT LAYOUT PLAN	FAA	FEDERAL AVIATION ADMINISTRATION	NOAA	NATIONAL OCEANIC AND ATMOSPHERIC ADMINISTRATION	RRC	RUNWAY REFERENCE CODE
ALS	APPROACH LIGHTING SYSTEM	FBO	FIXED BASE OPERATOR	NOS	NATIONAL OCEAN SERVICE	RSA	RUNWAY SAFETY AREA
APRC	APPROACH REFERENCE CODE	FG	FINISHED GRADE	NPI	NON-PRECISION INSTRUMENT	RW	RUNWAY
ARC	AIRPORT REFERENCE CODE	GA	GENERAL AVIATION	NOTAMS	NOTICE TO AIRMEN	RVZ	RUNWAY VISIBILITY ZONE
ARP	AIRPORT REFERENCE POINT	LAT	LATITUDE	NTS	NOT TO SCALE	TBD	TO BE DETERMINED
ARPZ	APPROACH RUNWAY PROTECTION ZONE	LDA	LANDING DISTANCE AVAILABLE	OCS	OBSTACLE CLEARANCE SURFACE	TERPS	TERMINAL INSTRUMENT PROCEDURES
ASDA	ACCELERATE STOP DISTANCE AVAILABLE	LONG	LONGITUDE	PACS/SACS	PRIMARY AND SECONDARY AIRPORT CONTROL	TDG	TAXIWAY DESIGN GROUP
AWOS	AUTOMATED WEATHER OBSERVATION SYSTEM	MAX	MAXIMUM	STATIONS		TODA	TAKE OFF DISTANCE AVAILABLE
BLDG	BUILDING	MIN	MINIMUM	PAPI	PRECISION APPROACH PATH INDICATOR	TOFA	TAXIWAY OBJECT FREE AREA
BRL	BUILDING RESTRICTION LINE	MIRL	MEDIUM INTENSITY RUNWAY LIGHTS	PCN	PAVEMENT CLASSIFICATION NUMBER	TORA	TAKE OFF RUN AVAILABLE
CL	CENTERLINE	MSL	MEAN SEA LEVEL	POFZ	PRECISION OBSTACLE FREE ZONE	TSS	THRESHOLD SITING SURFACE
DPRC	DEPARTURE REFERENCE CODE	N/A	NOT APPLICABLE	R	RADIUS	TW	TAXIWAY
DRPZ	DEPARTURE RUNWAY PROTECTION ZONE	NAD83	NORTH AMERICAN DATUM OF 1983	RDC	DESIGN CODE	TYP	TYPICAL
E	EXISTING			REIL	RUNWAY END IDENTIFIER LIGHTS	TSA	TAXIWAY SAFETY AREA
EG	EXISTING GROUND			ROFA	RUNWAY OBJECT FREE AREA	U	ULTIMATE
				ROFZ	RUNWAY OBSTACLE FREE ZONE	USGS	U.S. GEOLOGICAL SURVEY

REV	DATE	DESCRIPTION	BY

FAA APPROVAL

DESIGNED: KP
 DRAWN: RT
 CHECKED: JG
 APPROVED: MO
 LAST EDIT: 5/16/23
 PLOT DATE: 11/16/23



WWW.DOWL.COM

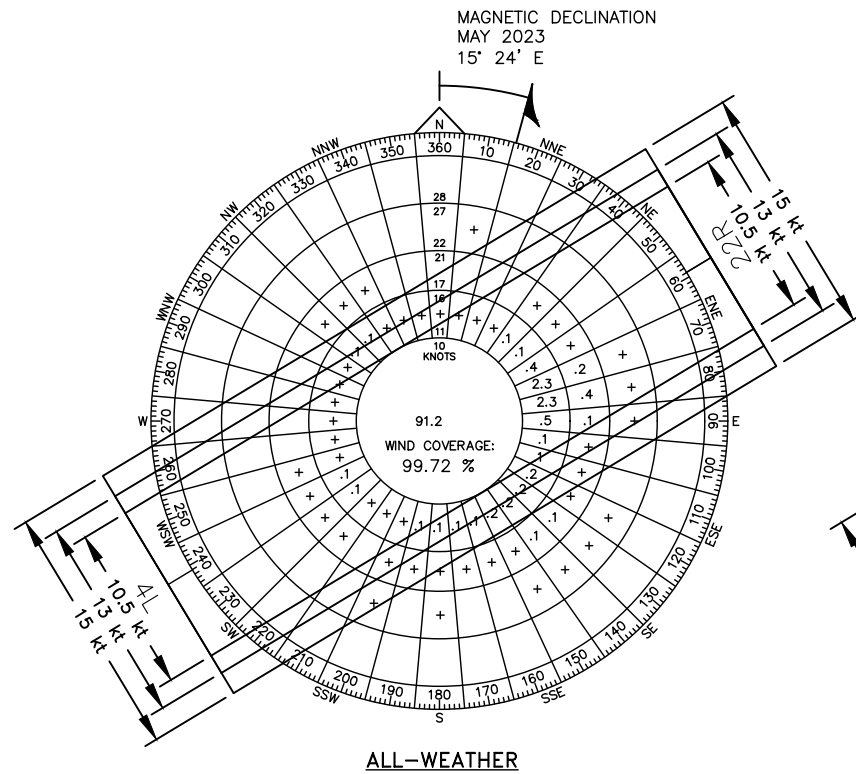
NENANA MUNICIPAL AIRPORT (ENN)
 NENANA, ALASKA
 AIRPORT LAYOUT PLAN
 COVER SHEET

PROJECT	50209.01
DATE	##/##/20##
© DOWL 2023	
SHEET	
1 OF 12	

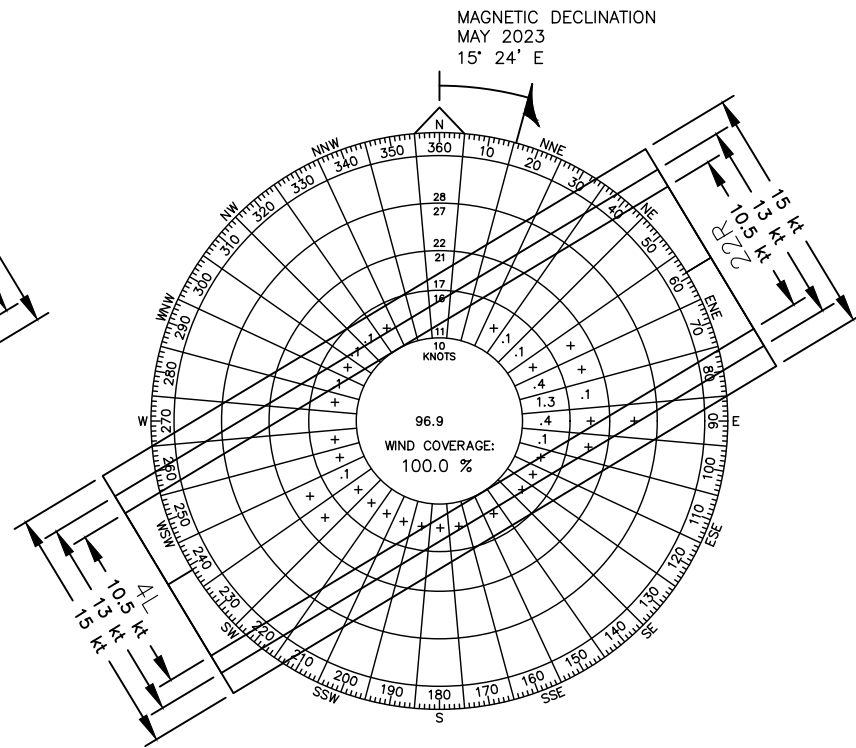
\\dowl.com\Projects\23\50209-01\65CAD\Aviation\Production\50209-01_ALP_1.dwg PLOT DATE 2023-11-16 11:10:10 SAVED DATE 2023-11-16 10:44 USER: kpyeatt

\\dowl.com\Projects\23_50209-01_65CAD\Aviation\Production\50209-01_ALP_2.dwg PLOT DATE 2023-11-16 11:11 SAVED DATE 2023-11-16 11:09 USER: kpyeatt

DRAFT



ALL-WEATHER



INSTRUMENT METEOROLOGICAL
CONDITION

SOURCE: 702600 NENANA MUNICIPAL AIRPORT
STATION NAME: PANN
PERIOD 2013-2022
SAMPLED IN MILES PER HOUR

MODIFICATION TO STANDARDS

DESCRIPTION	STANDARD	EXISTING	ULTIMATE	AIRSPACE #	APPROVAL DATE
FULL LENGTH PARALLEL TAXIWAY TO THRESHOLD ¹	FULL LENGTH	NONE	FULL LENGTH		

NONSTANDARD CONDITIONS

ITEM	STANDARD	EXISTING	ULTIMATE
PARALLEL RUNWAY SEPARATION (RUNWAY 4L-22R / 4R-22L) ²	700'	300	300

WIND DATA

RUNWAY	10.5 kt (A-I)	13 kt (A-I)	15 kt (A-I)
4L-22R (ALL)	98.33%	99.06%	99.55%
4L-22R (IFR)	99.71%	99.88%	99.97%

PACS & SACS (OR OTHER CONTROL)

PID	DESIGNATION	LATITUDE	LONGITUDE	ELLIPSOID HEIGHT	NORTHING	EASTING	ELEVATION	DESCRIPTION

GEOGRAPHIC COORDINATES (NAD83) & ELEVATIONS (NAVD88)

ITEM	EXISTING LATITUDE	EXISTING LONGITUDE	EXISTING ELEVATION	ULTIMATE LATITUDE	ULTIMATE LONGITUDE	ULTIMATE ELEVATION
AIRPORT REFERENCE POINT	064° 32' 50.28" N	149° 04' 26.13" W	367.7'	SAME	SAME	SAME
THRESHOLD RW 4L	064° 32' 44.1687" N	149° 05' 13.4018" W	367.6'	SAME	SAME	SAME
THRESHOLD RW 22R	064° 33' 07.5298" N	149° 03' 43.2638" W	365.2'	SAME	SAME	SAME
THRESHOLD RW 4R	064° 32' 44.7375" N	149° 04' 57.9072" W	363.8'	SAME	SAME	SAME
THRESHOLD RW 22L	064° 32' 54.7942" N	149° 04' 19.1067" W	363.5'	SAME	SAME	SAME
THRESHOLD RW 4W	064° 32' 33.5300" N	149° 04' 50.6300" W	352.1'	SAME	SAME	SAME
THRESHOLD RW 22W	064° 32' 53.3600" N	149° 03' 42.3700" W	352.1'	SAME	SAME	SAME

NOTES

- TEMPORARY PROPOSED PARALLEL TAXI TURNAROUND ON 22R APPROACH END. FULL LENGTH PARALLEL TAXIWAY PROPOSED FOR A FUTURE PROJECT.
- PER AC 150-5300-13B SECTION 3.9.2.2 A 300' RUNWAY CENTERLINE TO RUNWAY CENTERLINE SEPARATION CONFIGURATION MAY BE SUITABLE FOR A PAVED RUNWAY PAIRED WITH A TURF RUNWAY.

AIRPORT DATA

ITEM	EXISTING	ULTIMATE
ICAO IDENTIFIER	PANN	SAME
NATIONAL AIRPORT IDENTIFIER	ENN	SAME
FAA SITE NUMBER	50524.*A	SAME
AIRPORT REFERENCE CODE (ARC)	B-III	SAME
NPIAS SERVICE LEVEL (P, CS, R, GA)	GA	SAME
AIRPORT ELEVATION (NAVD88)	362 FT. MSL	SAME
MEAN MAX. TEMPERATURE, HOTTEST MONTH (JULY)	72°F	SAME
OBSTRUCTION SURVEY SOURCE & TYPE	VERTICALLY GUIDED	SAME
MAGNETIC DECLINATION, YEAR, RATE OF CHANGE	15° 24', 2023, 0° 18' W/YR	
AIRPORT AND TERMINAL NAVIGATION AIDS	REILS/VASI/NDB	SAME

DECLARED DISTANCES

	RUNWAY	TORA	TODA	ASDA	LDA
ULTIMATE	4L	4600'	4600'	4600'	4600'
	22R	4600'	4600'	4600'	4600'
	4R	1980'	1980'	1980'	1980'
	22L	1980'	1980'	1980'	1980'
	4W	3601'	3601'	3601'	3601'
	22W	3601'	3601'	3601'	3601'
EXISTING	4L	SAME	SAME	SAME	SAME
	22R	SAME	SAME	SAME	SAME
	4R	SAME	SAME	SAME	SAME
	22L	SAME	SAME	SAME	SAME

REVISIONS	BY	DATE	DESCRIPTION



NENANA MUNICIPAL AIRPORT (ENN)
 NENANA, ALASKA
 AIRPORT LAYOUT PLAN
 AIRPORT DATA SHEET

PROJECT 50209.01
DATE ##/##/20##

© DOWL 2023
SHEET

DRAFT

RUNWAY DATA TABLE

ITEM	RUNWAY 4L-22R		RUNWAY 4R-22L		RUNWAY 4W-22W	
	EXISTING	ULTIMATE	EXISTING	ULTIMATE	EXISTING	ULTIMATE
FAR PART 77 APPROACH CATEGORY (UTILITY, OTHER THAN UTILITY)	OTHER THAN UTILITY	SAME	UTILITY	SAME	UTILITY	SAME
FAR PART 77 APPROACH TYPE (V, C, NPA, PA)	C / V	SAME	V / V	SAME	V / V	SAME
RUNWAY DESIGN CODE (RDC)	B-III	A-1B	A-I	SAME	A-I	SAME
RUNWAY REFERENCE CODE (RRC)	B-III	SAME	A-I	SAME	A-I	SAME
CRITICAL AIRCRAFT	UNKNOWN	BE9T	<12,000 lb	SAME	<12,000 lb	SAME
FAR PART 77 APPROACH SLOPE	34:1 / 20:1	SAME	20:1 / 20:1	SAME	20:1 / 20:1	SAME
APPROACH TSS SLOPE	34:1 / 20:1	SAME	20:1 / 20:1	SAME	20:1 / 20:1	SAME
RUNWAY SURFACE	ASPHALT	SAME	TURF/GRASS	SAME	WATER/ICE	SAME
PAVEMENT STRENGTH (SW, DW, DTW x1000lbs)	160 SW	SAME	N/A	SAME	N/A	SAME
TRUE MEAN BEARING	59° / 239°	SAME	59° / 239°	SAME	59° / 239°	SAME
MAXIMUM ELEVATION ABOVE MSL	367.6'	SAME	364.5'	SAME	352.1'	SAME
EFFECTIVE GRADE	0.03%	SAME	0.01% / -0.01%	SAME	0.0% / 0.0%	SAME
RUNWAY TOUCHDOWN ZONE ELEVATIONS (NAVD88)	367.7' / 367.7'	SAME	364.5' / 364.5'	SAME	352.1' / 352.1'	SAME
RUNWAY DIMENSIONS	100' x 4600'	SAME	60' x 1980'	SAME	100' x 3601'	SAME
RUNWAY SAFETY AREA (RSA) DIMENSIONS	300' x 5800'	SAME	120' x 2460'	SAME	120' x 4081'	SAME
RSA LENGTH BEYOND RW ENDS	600' / 600'	SAME	240' / 240'	SAME	240' x 240'	SAME
RUNWAY PROTECTION ZONE (RPZ) DIMENSIONS	1000' x 1510' x 1700'	SAME	250' x 450' x 1000'	SAME	250' x 450' x 1000'	SAME
RUNWAY OBJECT FREE AREA (ROFA) DIMENSIONS	800' x 5800'	SAME	250' x 2460'	SAME	250' x 4081'	SAME
ROFA LENGTH BEYOND RW ENDS	600' / 600'	SAME	240' / 240'	SAME	240' / 240'	SAME
RUNWAY OBSTACLE FREE ZONE (ROFZ) DIMENSIONS	400' x 5800'	SAME	120' x 2460'	SAME	120' x 2460'	SAME
PRECISION OBJECT FREE ZONE (POFZ) DIMENSIONS	N/A	SAME	N/A	SAME	N/A	SAME
RUNWAY LIGHTING TYPE	MIRL	SAME	MIRL	SAME	NONE	SAME
RUNWAY MARKING TYPE (P, NP, NONE)	NPI / NPI	SAME	NONE	SAME	BUOY	SAME
RUNWAY VISUAL APPROACH AIDS	NDB/REIL/PAPI	SAME	NONE	SAME	NONE	SAME
RUNWAY LANDING AIDS	NDB/REIL/PAPI	SAME	NONE	SAME	NONE	SAME

NOTES

- ALL ULTIMATE TAXIWAYS ASSUMED TO BE TAXI DESIGN GROUP 1B (TDG-1B) BASED ON THE CRITICAL AIRCRAFT (BE9T), WITH THE EXCEPTION OF TAXILANES K AND L, WHICH ARE TDG-1B.
- TAXIWAY C RENAMED TO TAXIWAY I FOR THE ULTIMATE LAYOUT. AS SUCH, TAXIWAY C ULTIMATE DATA IS FOR THE NEW PARALLEL TAXIWAY CONNECTOR; SEE TAXIWAY I FOR EXISTING TAXIWAY C ULTIMATE DATA.
- TAXIWAY E NOT TO BE INCLUDED IN ULTIMATE PARALLEL TAXIWAY CONFIGURATION; IT IS CONTINGENT ON AN APRON EXPANSION.

TAXIWAY DATA TABLE

ITEM	TAXIWAY A		TAXIWAY B		TAXIWAY C ²		TAXIWAY D		TAXIWAY E ³		TAXIWAY F		TAXIWAY G	
	EXISTING	ULTIMATE	EXISTING	ULTIMATE	EXISTING	ULTIMATE	EXISTING	ULTIMATE	EXISTING	ULTIMATE	EXISTING	ULTIMATE	EXISTING	ULTIMATE
TAXIWAY DESIGN GROUP	TDG-3	TDG-1B	TDG-3	TDG-1B	TDG-1B	SAME	-	TDG-1B	-	TDG-1B	-	TDG-1B	-	TDG-1B
TAXIWAY DIMENSIONS	50' x 800'	25' x 4749'	50' x 700'	25' x 337'	25' x 773'	25' x 337'	-	-	-	25' x 337'	-	25' x 337'	-	25' x 337'
TAXIWAY SHOULDER WIDTH	20'	10'	20'	10'	10'	SAME	-	10'	-	10'	-	10'	-	10'
SEPARATION FROM PARALLEL RUNWAY	-	-	-	-	-	-	-	-	-	-	-	-	-	-
TAXIWAY (TSA) WIDTH	118'	49'	118'	49'	49'	SAME	-	49'	-	49'	-	49'	-	49'
TAXIWAY OBJECT FREE AREA (TOFA) WIDTH	171'	89'	171'	89'	89'	SAME	-	89'	-	89'	-	89'	-	89'
TAXIWAY LIGHTING	NO	YES	NO	YES	NO	YES	-	YES	-	YES	-	YES	-	YES
TAXIWAY MARKING	YES	SAME	YES	SAME	NO	YES	-	YES	-	YES	-	YES	-	YES

TAXIWAY DATA TABLE CONTINUED

ITEM	TAXIWAY H		TAXIWAY I		TAXILANE J		TAXILANE K		TAXILANE L		-		-	
	EXISTING	ULTIMATE	EXISTING	ULTIMATE	EXISTING	ULTIMATE	EXISTING	ULTIMATE	EXISTING	ULTIMATE	-	-	-	-
TAXIWAY DESIGN GROUP	-	TDG-1B	-	TDG-1B	-	TDG-1B	-	TDG-1A	-	TDG-1A	-	-	-	-
TAXIWAY DIMENSIONS	-	25' x 337'	-	25' x 773'	-	25' x 475'	-	25' x 473'	-	25' x 473'	-	-	-	-
TAXIWAY SHOULDER WIDTH	-	10'	-	10'	-	10'	-	10'	-	10'	-	-	-	-
SEPARATION FROM PARALLEL RUNWAY	-	-	-	-	-	-	-	-	-	-	-	-	-	-
TAXIWAY (TSA) WIDTH	-	49'	-	49'	-	49'	-	49'	-	49'	-	-	-	-
TAXIWAY OBJECT FREE AREA (TOFA) WIDTH	-	89'	-	89'	-	79'	-	79'	-	79'	-	-	-	-
TAXIWAY LIGHTING	-	YES	-	YES	-	YES	-	YES	-	YES	-	-	-	-
TAXIWAY MARKING	-	YES	-	YES	-	YES	-	YES	-	YES	-	-	-	-

REV	DATE	SHEET INFO						BY
		DESIGNED	DRAWN	CHECKED	APPROVED	LAST EDIT	PLOT DATE	
		KP	RT	JG	MO	5/16/23	11/16/23	



NENANA MUNICIPAL AIRPORT (ENN)
NENANA, ALASKA
AIRPORT LAYOUT PLAN
AIRPORT DATA SHEET 2

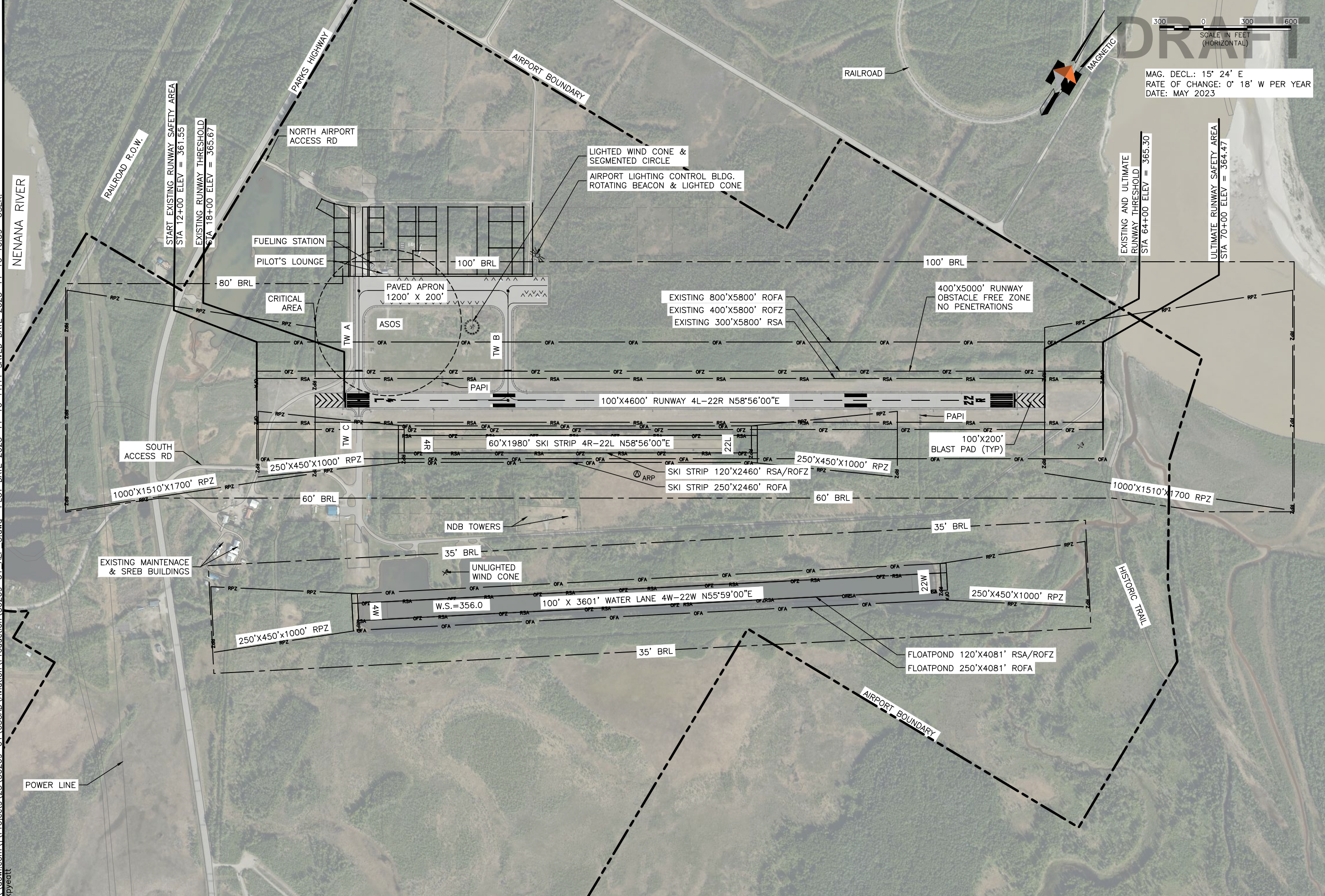
PROJECT 50209.01
DATE ##/##/20##

© DOWL 2023
SHEET

\\dowl.com\1\Projects\23\50209-01\65CAD\Aviation\Production\50209-01_ALP_2.dwg PLOT DATE 2023-11-16 11:11 SAVED DATE 2023-11-16 11:09 USER: kpyeatt

\\dowl.com\Projects\23\50209-01\65CAD\Aviation\Production\50209-01_ALP_3.dwg PLOT DATE 2023-11-16 11:11 SAVED DATE 2023-11-16 10:59 USER: kpyeatt

NENANA RIVER



DRAFT

SCALE IN FEET (HORIZONTAL)
300 0 300 600

MAG. DECL.: 15° 24' E
RATE OF CHANGE: 0° 18' W PER YEAR
DATE: MAY 2023

REV	DATE	DESCRIPTION

DOWL
WWW.DOWL.COM

NENANA MUNICIPAL AIRPORT (ENN)
NENANA, ALASKA
AIRPORT LAYOUT PLAN
EXISTING AIRPORT LAYOUT PLAN

PROJECT	50209.01
DATE	##/##/20##
© DOWL 2023	
SHEET	
4A OF 12	

\\dowl.com\1\Projects\23\50209-01\65CAD\Aviation\Production\50209-01_ALP_3.dwg PLOT DATE 2023-11-16 11:11 SAVED DATE 2023-11-16 10:59 USER: kpyeatt

NENANA RIVER

DRAFT
SCALE IN FEET (HORIZONTAL)
300 0 300 600

MAG. DECL.: 15° 24' E
RATE OF CHANGE: 0° 18' W PER YEAR
DATE: MAY 2023

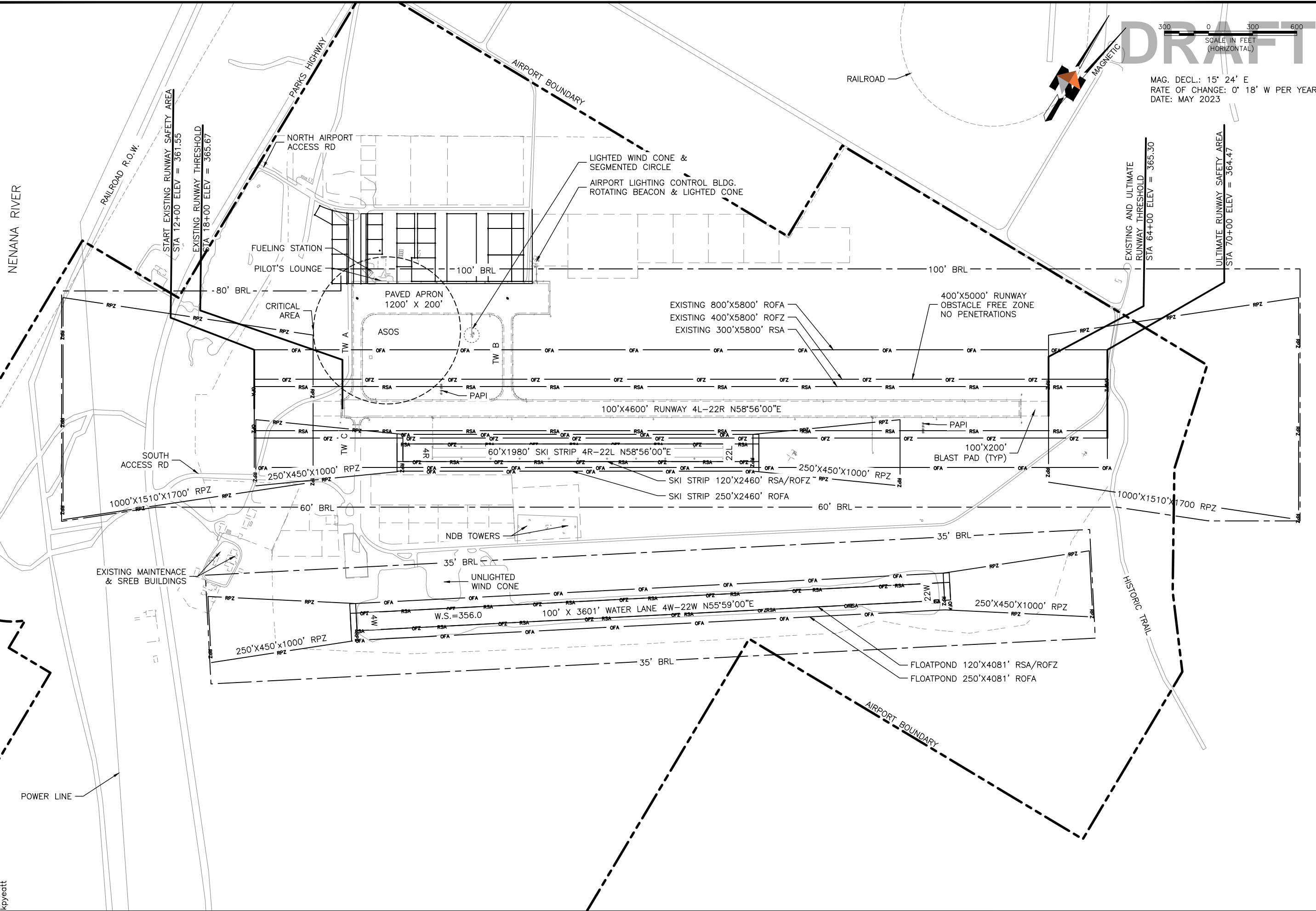
REV	DATE	DESCRIPTION

SHEET INFO	
DESIGNED	KP
DRAWN	RT
CHECKED	JG
APPROVED	MO
LAST EDIT	5/16/23
PLOT DATE	11/16/23

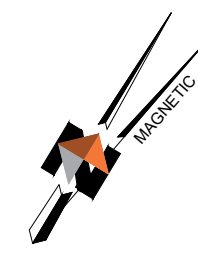
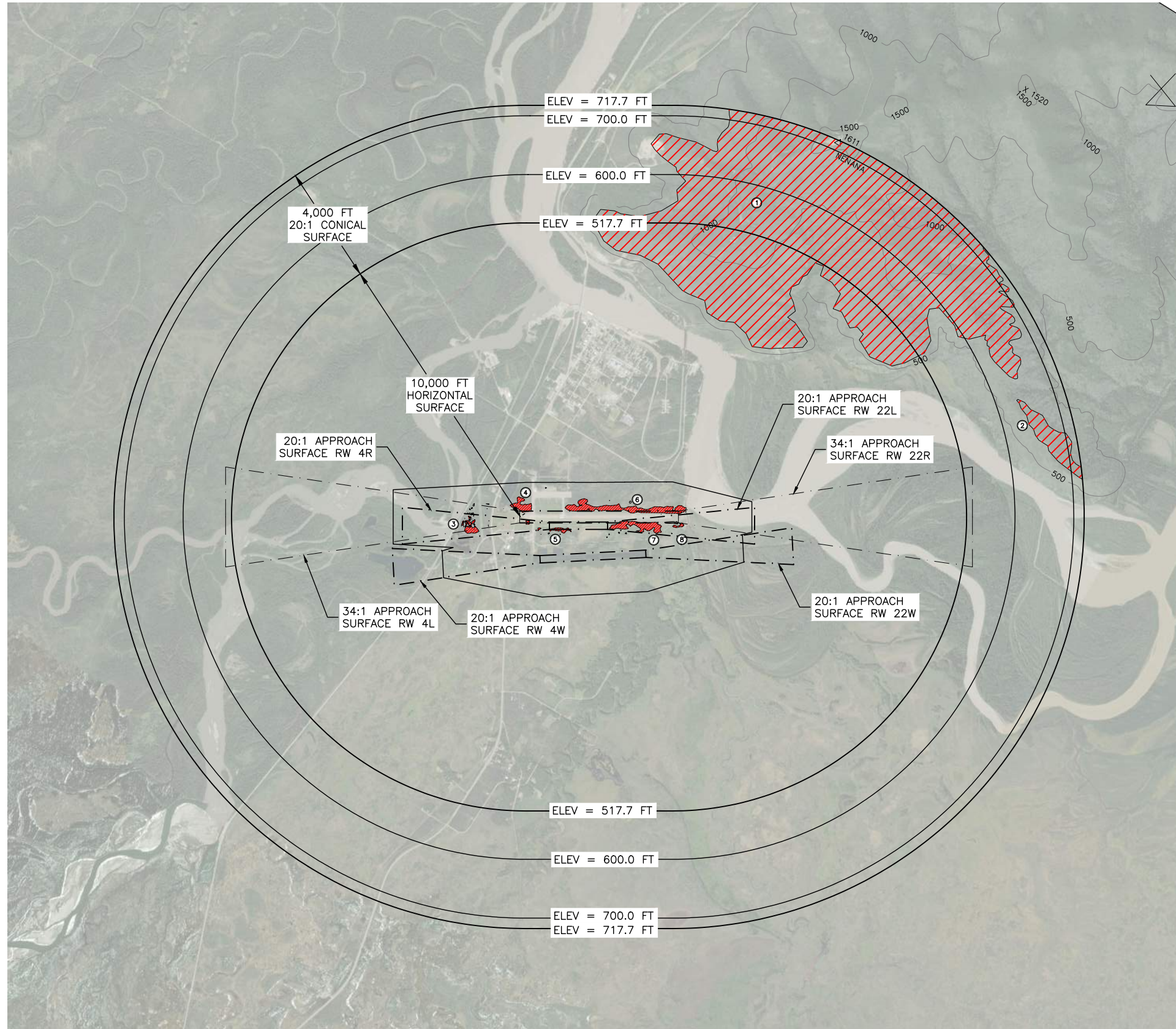
DOWL
WWW.DOWL.COM

NENANA MUNICIPAL AIRPORT (ENN)
NENANA, ALASKA
AIRPORT LAYOUT PLAN
EXISTING AIRPORT LAYOUT PLAN

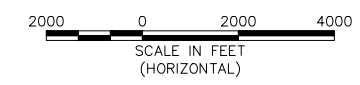
PROJECT	50209.01
DATE	##/##/20##
© DOWL 2023	
SHEET	
4B	OF 12



\\dowl.com\Projects\23\50209-01\65CAD\Aviation\Production\50209-01_ALP_6.dwg PLOT DATE 2023-11-16 11:12 SAVED DATE 2023-11-16 10:20 USER: kpyeatt



DRAFT
 MAG. DECL.: 15° 24' E
 RATE OF CHANGE: 0° 18' W PER YEAR
 DATE: MAY 2023

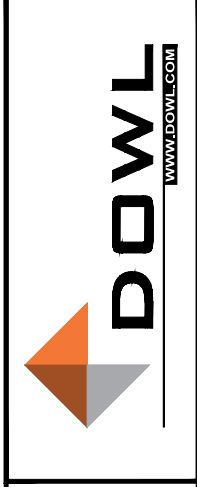


OBSTRUCTION	DESCRIPTION	HEIGHT OF PENETRATION	RECOMMENDATION
①	MOUNT NENANA	1,000 FT±	TO REMAIN
②	MOUNTAIN	100 FT±	TO REMAIN
③	TREE CLUSTER	100 FT±	REMOVE
④	TREE CLUSTER	100 FT±	REMOVE
⑤	TREE CLUSTER	100 FT±	REMOVE
⑥	TREE CLUSTER	100 FT±	REMOVE
⑦	TREE CLUSTER	100 FT±	REMOVE
⑧	TREE CLUSTER	100 FT±	REMOVE

- NOTE:**
- ALL ELEVATIONS AND CONTOURS ARE IN FEET BASED ON NAVD 88.
 - DESIGNATED AIRPORT ELEVATION IS 367.3.
 - USGS QUADRANGLE FAIRBANKS (A-5), ALASKA.

LEGEND:
 TERRAIN OBSTRUCTION

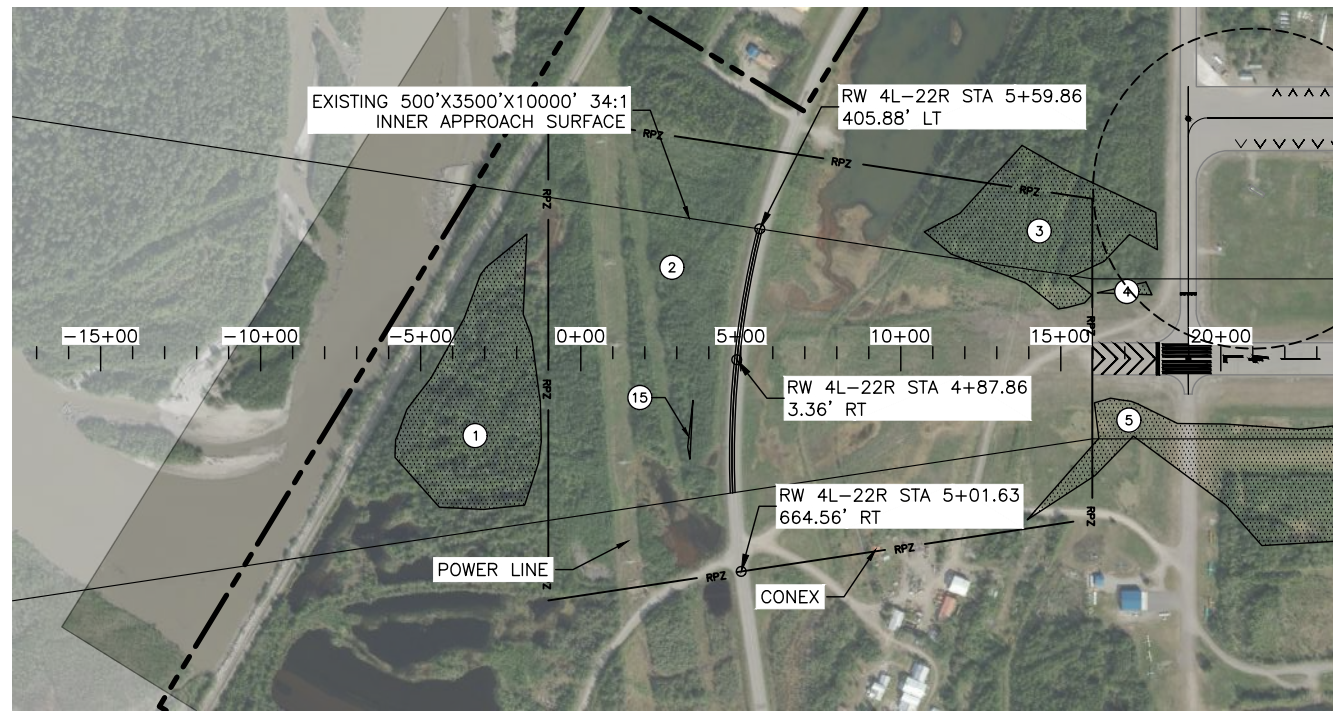
REV	DATE	DESCRIPTION	BY



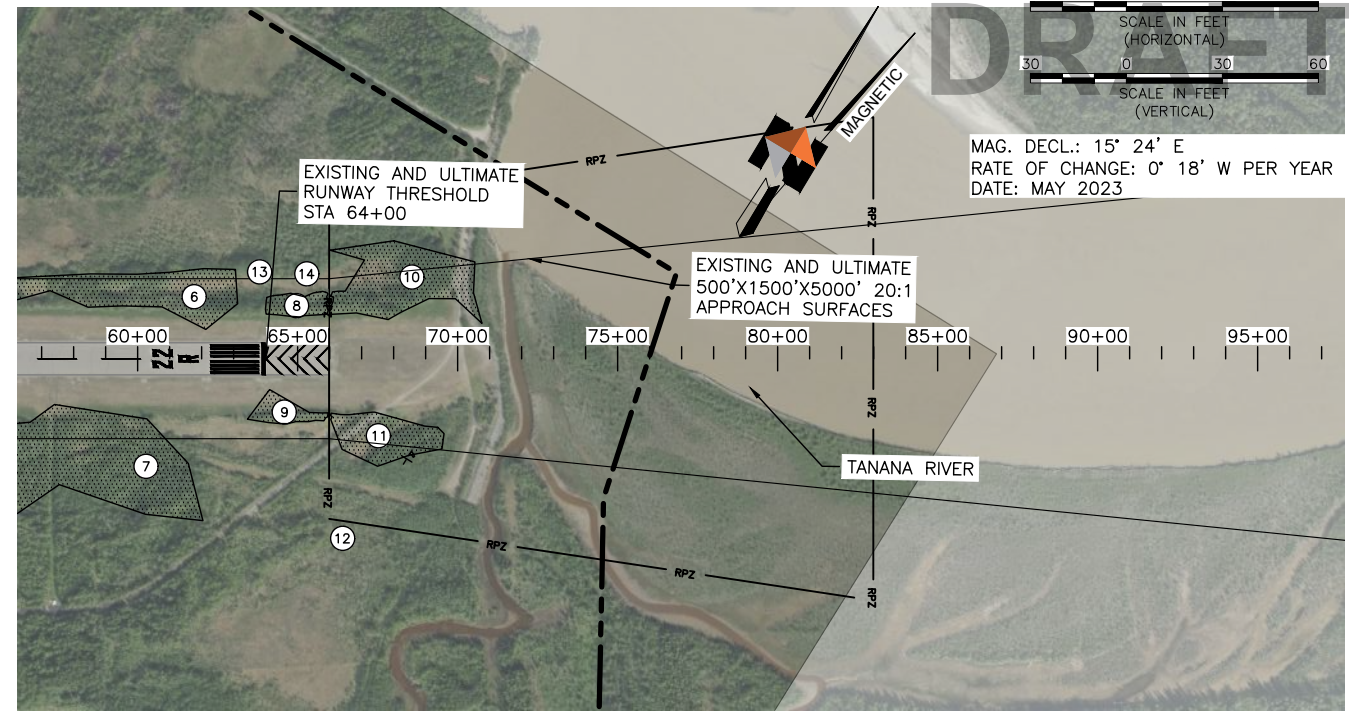
NENANA MUNICIPAL AIRPORT (ENN)
 NENANA, ALASKA
 AIRPORT LAYOUT PLAN
 AIRPORT AIRSPACE DRAWING

PROJECT	50209.01
DATE	##/##/20##
© DOWL 2023	
SHEET	
7	OF 12

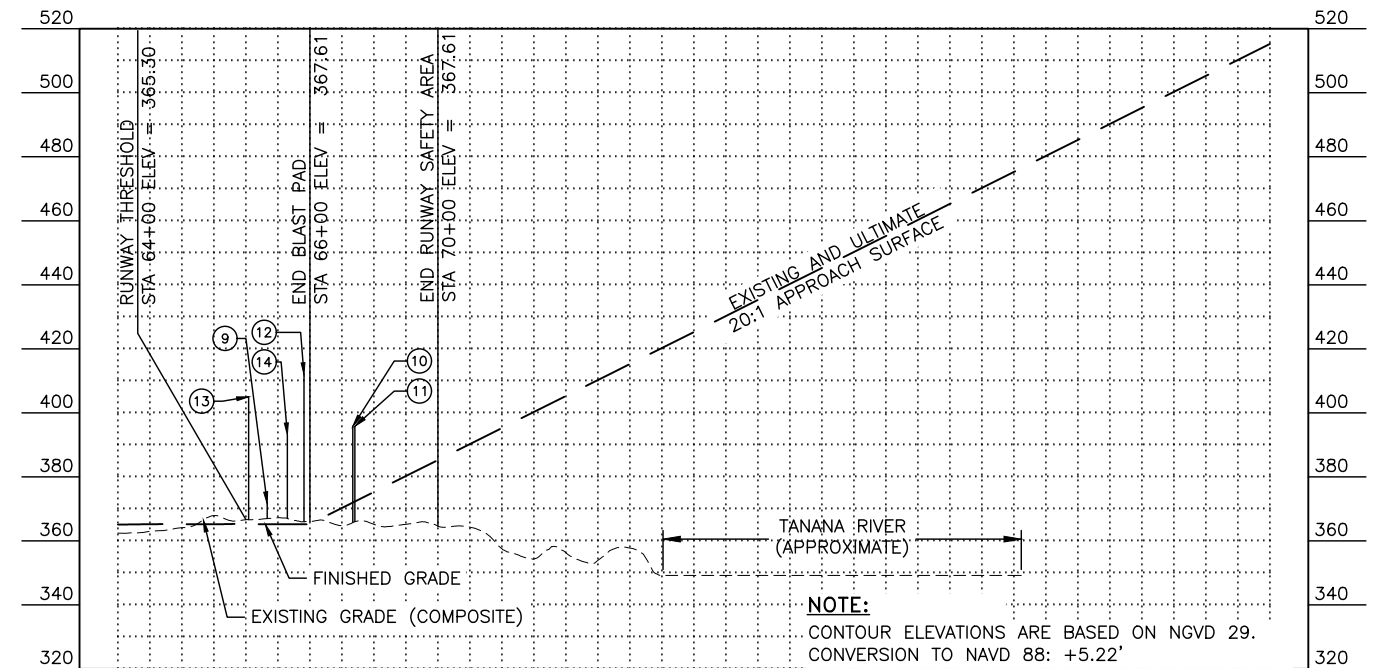
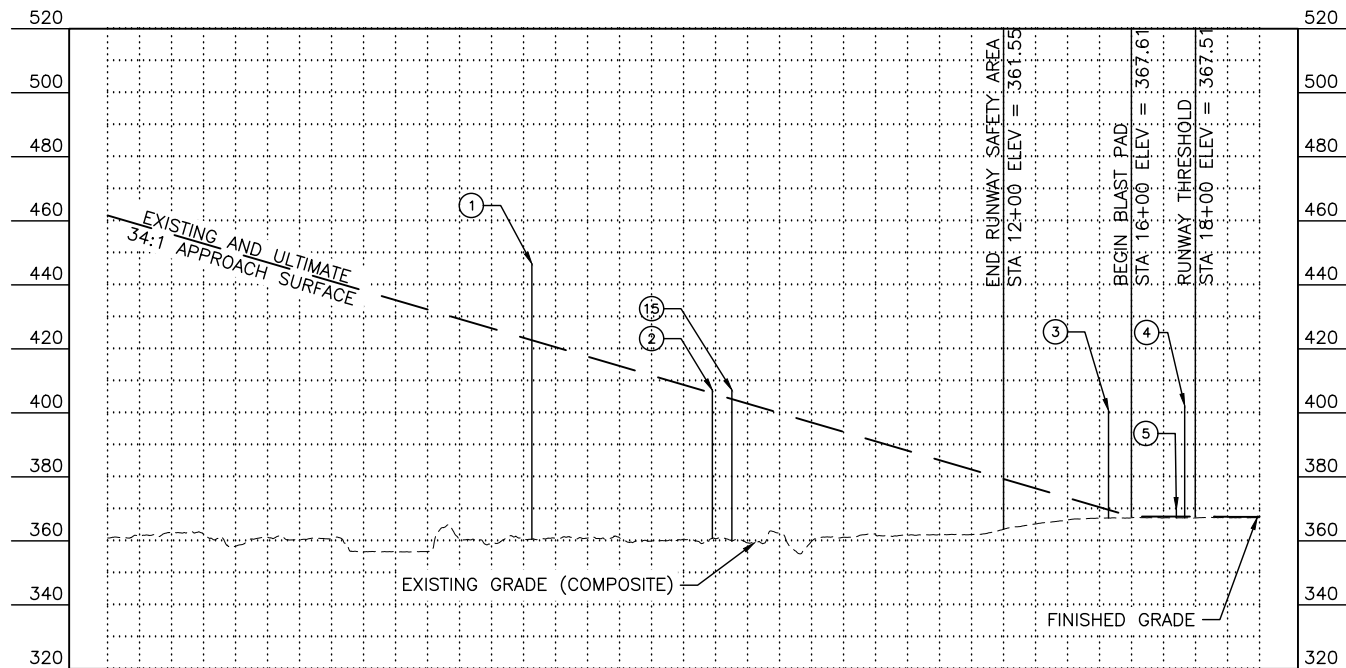
\\dowl.com\Projects\23_50209-01\65CAD\Aviation\Production\50209-01_ALP_7.dwg PLOT DATE 2023-11-16 11:13 SAVED DATE 2023-11-16 08:50 USER: kpyeatt



RUNWAY 4L



RUNWAY 22R



OBSTRUCTION TABLE

OBSTRUCTION	DESCRIPTION	STATION	OFFSET	OBSTRUCTION ELEVATION	SURFACE PENETRATED	SURFACE ELEVATION	AMOUNT PENETRATED	DISPOSITION	STAGE TO CORRECT
1	TREE CLUSTER								
2	TREE CLUSTER								
3	TREE CLUSTER								
4	TREE CLUSTER								
5	TREE CLUSTER								

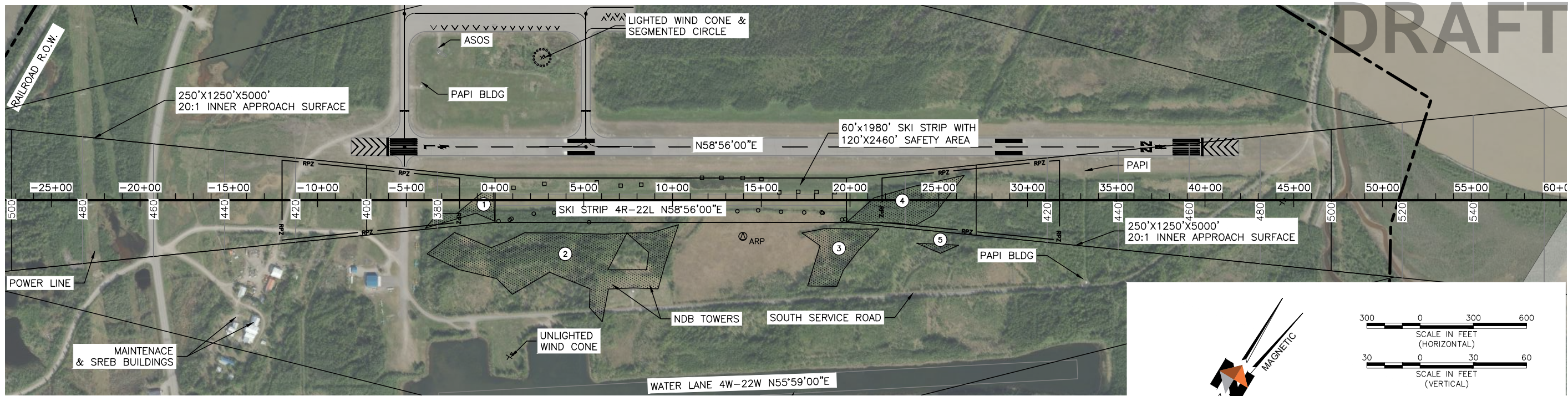
REV	DATE	DESCRIPTION



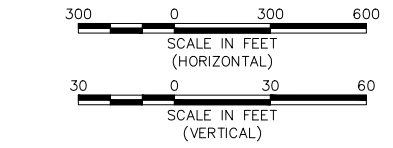
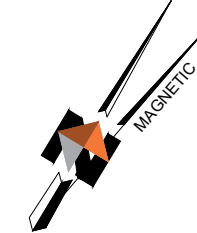
NENANA MUNICIPAL AIRPORT (ENN)
 NENANA, ALASKA
 AIRPORT LAYOUT PLAN
 RW 4L-22R INNER PORTION OF THE
 APPROACH PLAN & PROFILE

PROJECT	50209.01
DATE	##/##/20##
© DOWL 2023	
SHEET	
8 OF 12	

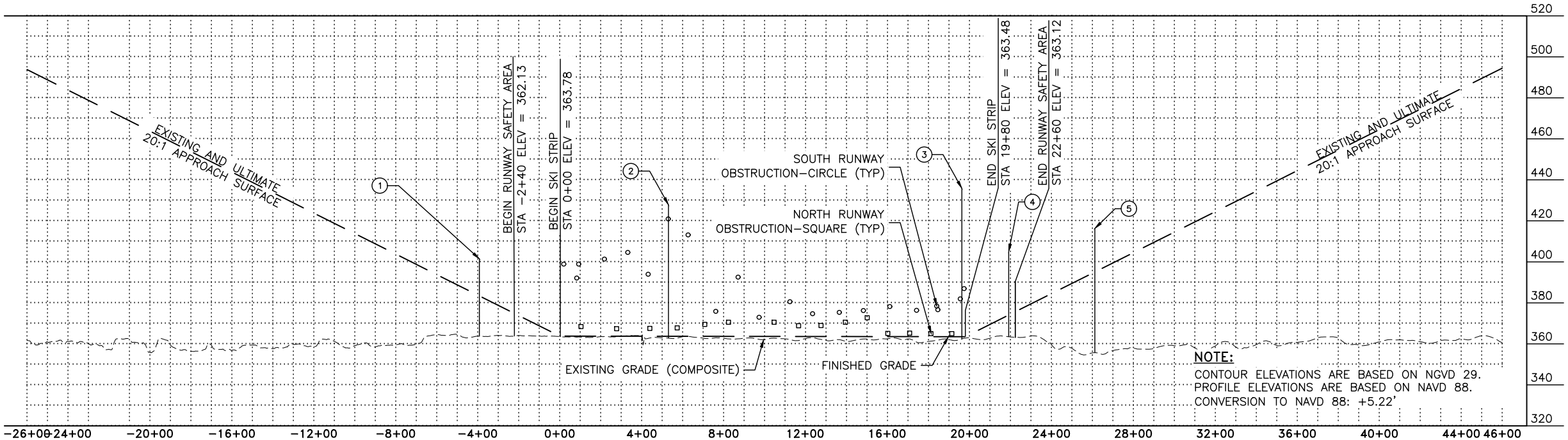
\\dowl.com\3\Projects\23\50209-01\65CAD\Aviation\Production\50209-01_ALP_8.dwg PLOT DATE 2023-11-15 18:07 SAVED DATE 2023-11-14 09:06 USER: kpyeatt



GRAVEL/SKI STRIP 4R-22L



MAG. DECL.: 15° 24' E
 RATE OF CHANGE: 0° 18' W PER YEAR
 DATE: MAY 2023



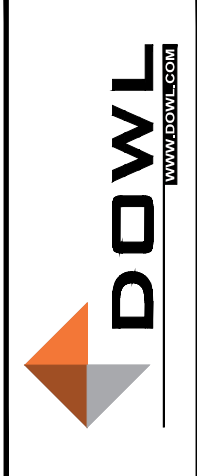
NOTE:
 CONTOUR ELEVATIONS ARE BASED ON NGVD 29.
 PROFILE ELEVATIONS ARE BASED ON NAVD 88.
 CONVERSION TO NAVD 88: +5.22'

OBSTRUCTION TABLE

OBSTRUCTION	DESCRIPTION	STATION	OFFSET	OBSTRUCTION ELEVATION	SURFACE PENETRATED	SURFACE ELEVATION	AMOUNT PENETRATED	DISPOSITION	STAGE TO CORRECT
1	TREE CLUSTER	-3+91.97'/-0+02.86'	157.78'/118.57' RT	401.47'	APPROACH	383.38'	18.09'	REMOVE	NEAR TERM
2	TREE CLUSTER	-3+83.57'/10+33.81'	303.21'/137.95' RT	373.82'	TRANSITIONAL	382.66'	8.84'	REMOVE	NEAR TERM
3	TREE CLUSTER	17+28.17'/21+63.27'	185.12'/162.01' RT	435.83	TRANSITIONAL	402.26'	33.57'	REMOVE	NEAR TERM
4	TREE CLUSTER	19+85.47'/26+43.96'	121.45' RT/139.73' LT	404.95'	APPROACH	374.74'	30.21'	REMOVE	NEAR TERM
5	TREE CLUSTER	23+75.33/26+12.09'	242.50'/253.90' RT	416.26'	TRANSITIONAL	404.50'	11.76'	REMOVE	NEAR TERM

DRAFT

REV	DATE	DESCRIPTION	BY

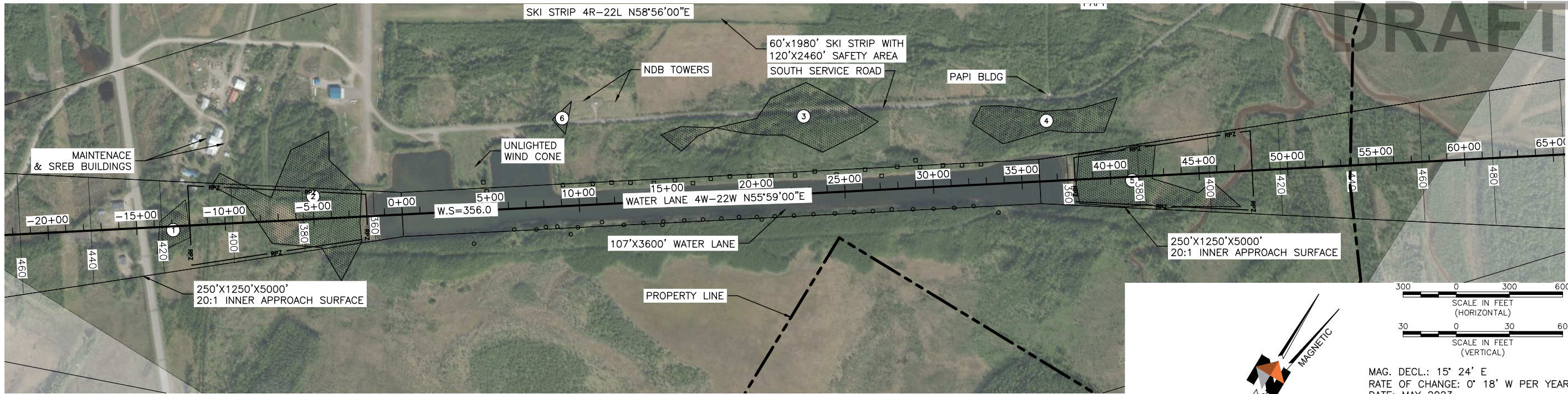


NENANA MUNICIPAL AIRPORT (ENN)
 NENANA, ALASKA
 AIRPORT LAYOUT PLAN
 RW 4R-22L INNER PORTION OF THE
 APPROACH PLAN & PROFILE

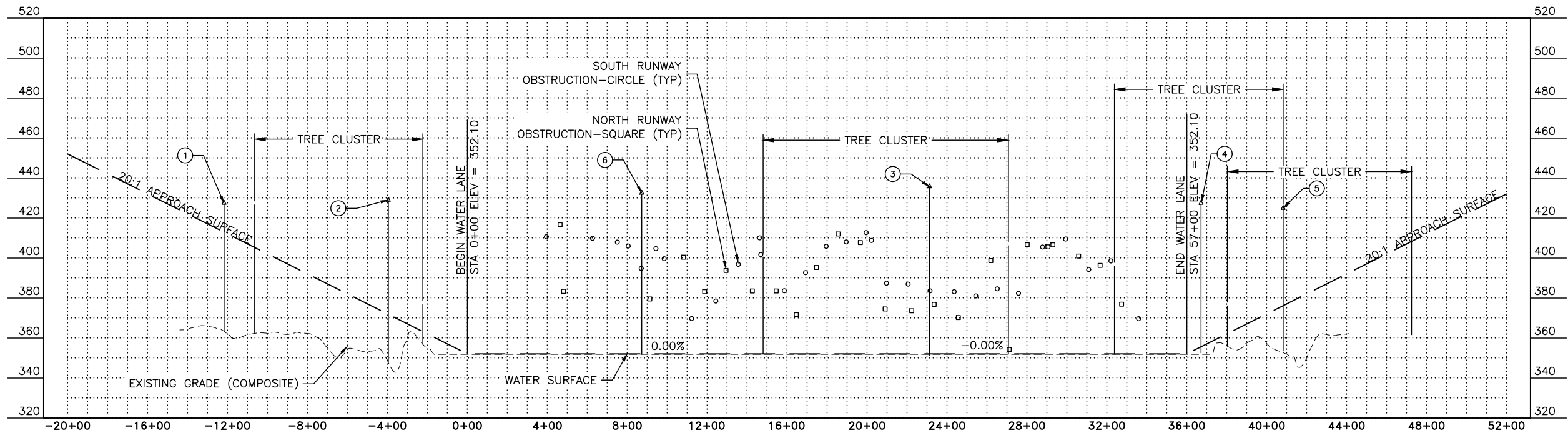
PROJECT 50209.01
 DATE ##/##/20##

© DOWL 2023
 SHEET

\\dowl.com\Projects\23\50209-01\65CAD\Aviation\Production\50209-01_ALP_9.dwg PLOT DATE 2023-11-15 18:07 SAVED DATE 2023-11-15 10:06 USER: kpyeatt



WATER LANE 4W-22W



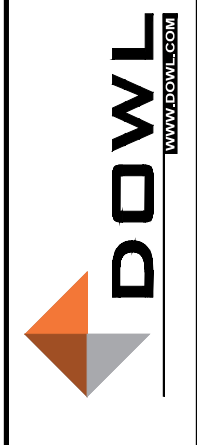
NOTE:
 CONTOUR ELEVATIONS ARE BASED ON NGVD 29.
 PROFILE ELEVATIONS ARE BASED ON NAVD 88.
 CONVERSION TO NAVD 88: +5.22'

OBSTRUCTION TABLE

OBSTRUCTION	DESCRIPTION	STATION	OFFSET	OBSTRUCTION ELEVATION	SURFACE PENETRATED	SURFACE ELEVATION	AMOUNT PENETRATED	DISPOSITION	STAGE TO CORRECT
1	TREE CLUSTER	-12+17.15	149.50' RT/146.60' LT	427.59'	APPROACH	416.82'	10'-9.24"	REMOVE	NEAR TERM
2	TREE CLUSTER	-10+64.33' / -2+22.87'	355.45' RT/489.51' LT	429.05'	APPROACH	368.07'	60'-11.76"	REMOVE	NEAR TERM
3	TREE CLUSTER	14+80.16' / 27+07.98'	228.82' LT/627.01' LT	435.83'	TRANSITIONAL	367.81'	68'-0.24"	REMOVE	NEAR TERM
4	TREE CLUSTER	32+38.31' / 40+82.99'	222.96' LT/450.13' LT	427.57'	TRANSITIONAL	383.03'	44'-6.48"	REMOVE	NEAR TERM
5	TREE CLUSTER	36+71.79' / 47+25.09'	200.86' RT/143.09' LT	424.61'	APPROACH	362.34'	62'-3.24"	REMOVE	NEAR TERM
6	TREE CLUSTER	9+29.73'	490.64' RT	427.78'	TRANSITIONAL	404.39'	23'-4.68"	REMOVE	NEAR TERM

REV	DATE	DESCRIPTION

SHEET INFO	DESIGNED	DRAWN	CHECKED	APPROVED	MO	LAST EDIT	PLOT DATE
	KP	RT	JG	MO		5/16/23	5/15/23

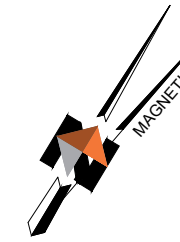
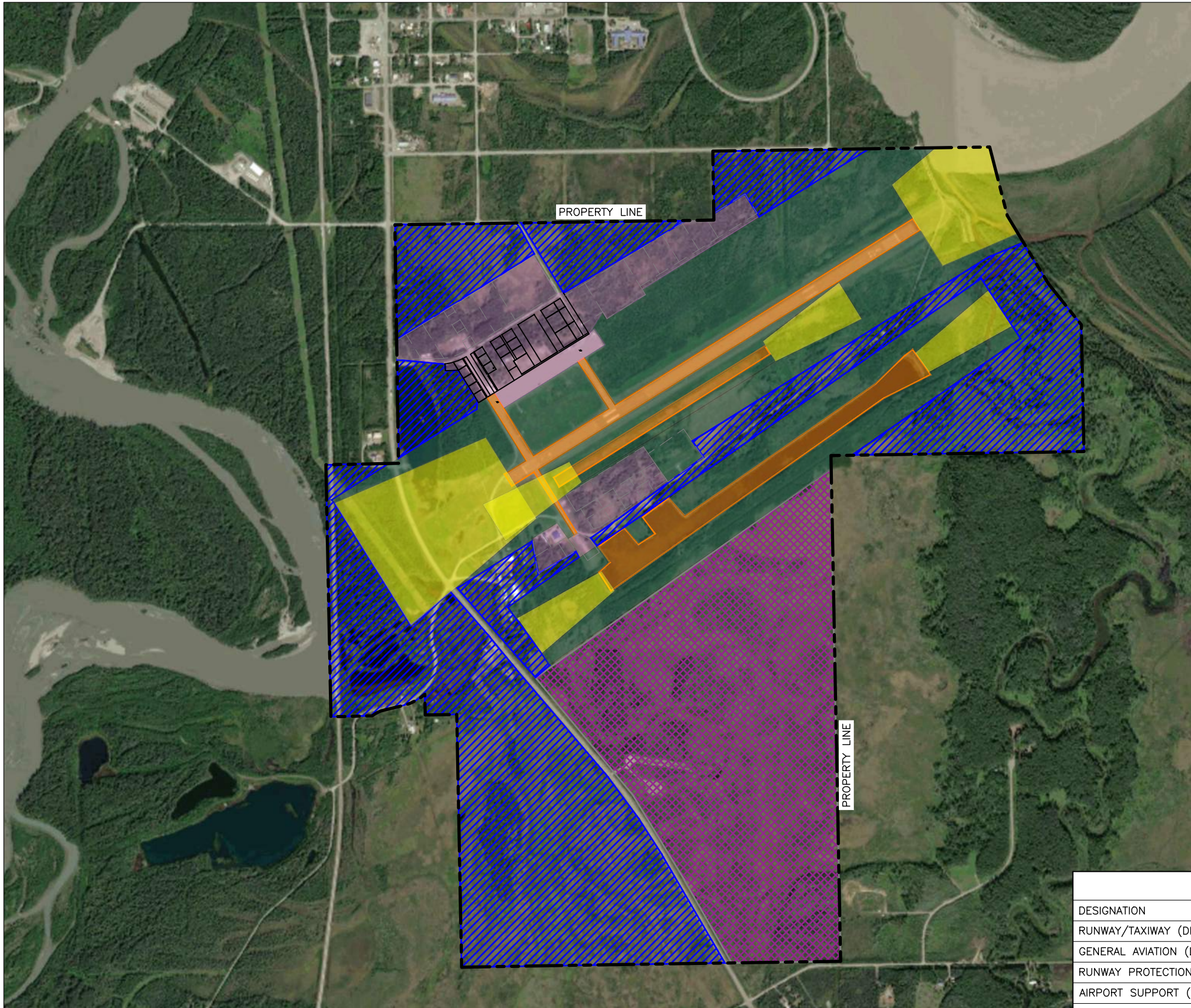


NENANA MUNICIPAL AIRPORT (ENN)
 NENANA, ALASKA
 AIRPORT LAYOUT PLAN
 RW 4W-22W INNER PORTION OF THE
 APPROACH PLAN & PROFILE

PROJECT 50209.01
 DATE ##/##/20##

© DOWL 2023
 SHEET

\\dowl.com\Projects\23\50209-01\65CAD\Aviation\Production\50209-01_ALP_11.dwg PLOT DATE 2023-11-16 11:14 SAVED DATE 2023-11-16 08:47 USER: kpyeatt



DRAFT

MAG. DECL.: 15° 24' E
 RATE OF CHANGE: 0° 18' W PER YEAR
 DATE: MAY 2023

LEGEND	
DESIGNATION	
RUNWAY/TAXIWAY (DIRECT AVIATION)	
GENERAL AVIATION (DIRECT AVIATION)	
RUNWAY PROTECTION ZONE (DIRECT AVIATION)	
AIRPORT SUPPORT (REMAIN AS OPEN SPACE)	
AIRPORT NON-AERONAUTICAL USE	
CITY OF NENANA PROPOSED SOLAR FARM	

REV	DATE	DESCRIPTION	BY

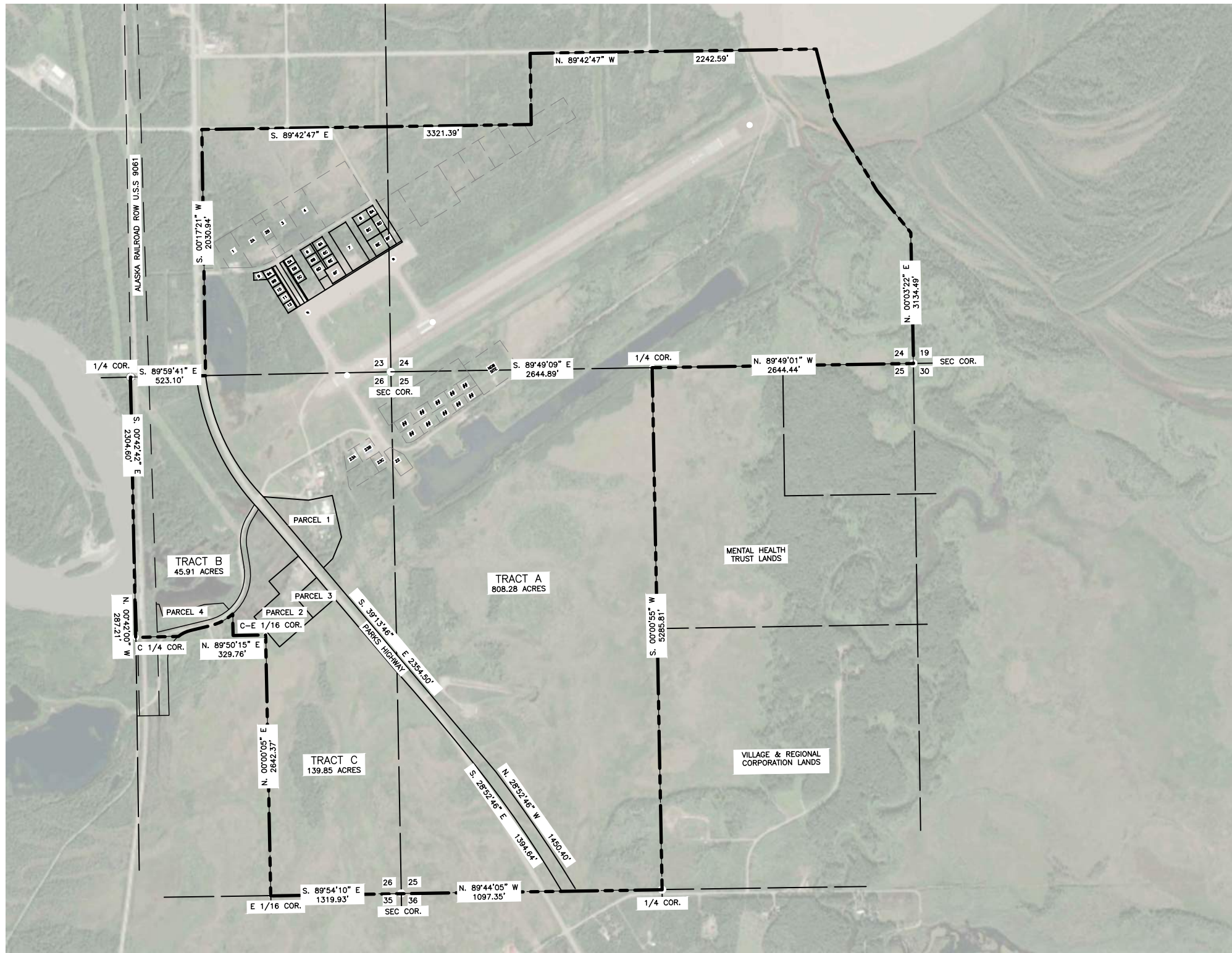


NENANA MUNICIPAL AIRPORT (ENN)
 NENANA, ALASKA
 AIRPORT LAYOUT PLAN
 ON-AIRPORT LAND USE DRAWING

PROJECT 50209.01
 DATE ##/##/20##

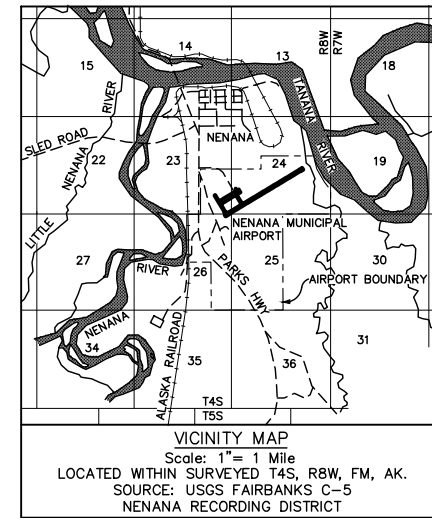
© DOWL 2023
 SHEET

\\dowl.com\Projects\23\50209-01\65CAD\Aviation\Production\50209-01_ALP_12.dwg PLOT DATE: 2023-11-16 11:14 SAVED DATE: 2023-11-16 11:09 USER: kpyeatt



MAGNETIC **DRAFT**

MAG. DECL.: 15° 24' E
 RATE OF CHANGE: 0° 18' W PER YEAR
 DATE: MAY 2023



NOTE:

1. THE PROPERTY INFORMATION SHOWN IS BASED ON THE CITY OF NENANA DRAWING TITLED "PROPERTY PLAN, EXHIBIT A, AIP-06, CITY OF NENANA, ALASKA, MUNICIPAL AIRPORT" BY WINCE-CORTHELL-BRYSON, DATED JULY 1992.
2. THE PROPERTY BOUNDARY LINES AND EASEMENTS SHOWN ARE BASED ON RECORD INFORMATION.
3. THE RUNWAY 4L-22R CENTERLINE MONUMENTS WERE RESET BY AMTECH IN SEPTEMBER, 2004 AFTER RUNWAY RECONSTRUCTION.

CITY OF NENANA LAND LEASE PARCELS

ID#	INTEREST	GRANTOR	GRANTEE	PARCEL SIZE (ACRES)	DATE ACQUIRED	RECORDED DOC. NO.	FINAL JUDGEMENT	ADA NO.	AIP GRANT NO.	REMARKS
A	QUITCLAIM DEED	UNITED STATES GOVERNMENT	CITY OF NENANA	808.28 ACRES	07/01/1964				-	
B	QUITCLAIM DEED	STATE OF ALASKA	CITY OF NENANA	45.91 ACRES	03/19/1964				-	
C	WARRANTY DEED	MISSING INFORMATION	CITY OF NENANA	139.85 ACRES	9/20/1964				-	
PARCEL 1	QUITCLAIM DEED	CITY OF NENANA	KOYOKUK SCHOOL DISTRICT	7.025 ACRES	9/22/1983				-	
PARCEL 2	LEASE	CITY OF NENANA	GOLDEN VALLEY ELECTRIC ASSOC	6.520 ACRES	7/01/1970				-	
PARCEL 3	LEASE	CITY OF NENANA	GLACIER STATE TELEPHONE CO.	1.928 ACRES	08/26/1969				-	
PARCEL 4	LEASE	CITY OF NENANA	ROBERT BECK	2.575 ACRES	MISSING				-	
NDB SITE	LEASE	CITY OF NENANA	FAA	3.719 ACRES	MISSING				-	

REV	DATE	DESCRIPTION	BY

DOWL
 WWW.DOWL.COM

NENANA MUNICIPAL AIRPORT (ENN)
 NENANA, ALASKA
 AIRPORT LAYOUT PLAN
 EXHIBIT 'A' AIRPORT PROPERTY MAP

PROJECT 50209.01
 DATE ###/##/20##